

# CASELLA



## Orbi-Trace Social Distancing Done Smartly



Orbi-Trace is a smart tag to effectively manage social distancing within the workplace.

From simple proximity alerts to a full contact tracking system, the compact and robust tag makes social distancing simple.

[www.casellasolutions.com](http://www.casellasolutions.com)

## Key Features

- Alerts whenever safe distance is breached
- Audible and vibration alerts
- Configurable safe distance range (Anchor required)
- Works on highly sophisticated Ultra-wideband (UWB) technology
- Battery life of up to 5 days
- USB-C charging
- Configurable alarm types
- No interference with WIFI or other RF technologies
- CE certified



Simple stop/start button and single alert/power LED



USB-C port and battery LED

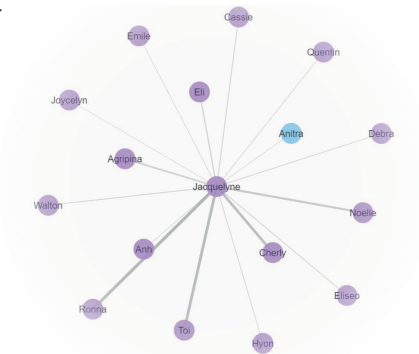
## Dependable and Simple to Use

Casella's Orbi-Trace tag is a smart bodily worn device designed to make social distancing easier. The system also offers contact tracing solutions when combined with Casella's wall-mounted anchors and associated online software.

## Contact Tracing and RTLS

Orbi-Trace is not just a social distancing tag. When used with a single anchor at an entry point, tags will transmit contact data with our intelligent online software. These innovative tools help to enforce social distancing and provide a detailed risk assessment of your working area.

A set of 3 Anchors will enable real-time location system (RTLS) on the tags.



## Decimetre Accuracy

Orbi-Trace tags work on Ultra-wideband (UWB) technology. The technology can detect distances or locations down to a 10cm accuracy by detecting the time it takes for signals to travel between tags. Orbi-Trace is 20x more accurate than Bluetooth and 50x more accurate than GPS, allowing social distancing to be accurately enforced.



**Use the Infection Insights Software to obtain a spread index of staff, review risk levels and log test results. Be safe without having to stop business.**

See available solutions overleaf to best suit your needs.

The Infection Insights Software is a free, secure online website available on Desktop browsers.

## Tag Use Only

With the use of two or more tags a 2m safe distance can be maintained with absolute ease. With easily configurable alert options (vibration and/or LED lights), breaches of the safe distance can be made clear.

### Per tag:

Dimensions	105 x 65 x 19mm 4.13 x 2.56 x 0.75 inches
Weight	94 grams 3.32oz
Buzzer	75dBA
Battery Type	2000mAh (Rechargeable)
Battery Life	Up to 5 days

**“Using the Orbi-Trace tags you can easily enforce safe distancing within any building, across staff and visitors, with minimal hassle”**



Compact design ensures ease of wear without being obtrusive. A belt clip on to the reverse side allows for waist mounting for security to the wearer.

## Tag and Single Anchor Use

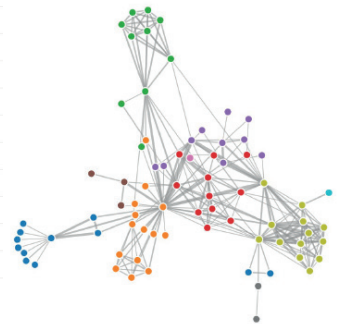
Simply remove your tag and place it near the anchor for a wireless upload of all stored data. The wall-mounted device will then upload this information to our intelligent software solution for analysis.

- Fully GDPR compliant storing data for no longer than two weeks
- Reduce the risk of infection and contamination

Result **Positive**  
 Test date 22-10-2020  
 Start of infection 08-10-2020 ~ 15-10-2020

Person At Risk	Infection Risk
Roseline	99%
Jacinto	41%
Sherice	29%
Shera	23%
Evla	16%
Doreatha	16%
Lou	13%
Agripina	12%
Mirella	11%
Lanny	11%
Noella	11%
Adell	10%
Eileen	10%
Jimmie	9%
Shavon	9%

Infection Insights Software can provide connection graphs, spread indexes for the listed staff/tags and risk assessments following a positive test result.



## Collate and export data

The Real Time Location System (RTLS) uses multiple anchors to provide exact location data. Coupled with the powerful software his provides:

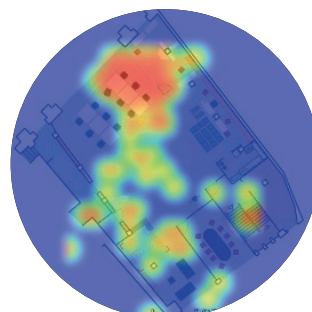
- Person Overview: All persons and their group, tag, tag battery life and spread index
- Connection Map: All connections between two persons and strength of the connection is generated
- Contact Trace: Tracing of all the contacts of a given person. Duration and date of the contact will also be given

## Full Real-Time Contact Tracking Use

The RTLS feature coupled with the powerful and free to use software will provide:

- Connection Maps
- Risk areas and Scores
- Contact tracing history
- Heat maps of active areas
- People movement trajectories
- Suggestions for reducing possible spreading of infections
- Software and firmware update capabilities

Consultation with a sales team member is highly recommended for this solution.



Heat maps to represent most active areas therefore areas with higher risk

**“This visibility will give me confidence to enforce adequate controls in my workplace”**

## Social Distancing - Using Tags

To use the Orbi-Trace tags to enforce social distancing, simply order the number of tags required for the number of individuals you wish to monitor. The only part number required in addition is the charging hub (Part Number OTRCHG10), no further infrastructure is required.

## Social Distancing with Contact Tracing & Risk Analysis

The kits below (OTRKIT10 and OTRKIT10PRO) contains all the infrastructure you need to get started. Just add additional tags and charging docks if your requirements are larger than 10 Orbi-Trace tags. Mount the anchor near to where the tags will be charged and all stored data will be uploaded wirelessly. The POE and Ethernet gateway simply requires plugging in and Infection Insights software can then be accessed over your own network. One LAN cable will be required separately to connect the anchor and gateway to local networks.

## Full, Real-Time Contact Tracking

Complete contact tracking and positioning is possible with additional infrastructure of more anchors. Contact Casella directly to arrange a consultation to establish the right infrastructure for your needs.

## Ordering Information:

Description	Part Number
Single Orbi-Trace tag (includes charging cable)	OTRX1
Pack of two Orbi-Trace tags (includes charging cables)	OTRX2
Orbi-Trace Starter Kit	OTRKIT10*
Orbi-Trace Starter Kit (includes kit case)	OTRKIT10PRO*
Orbi-Trace Kit Contains: 10x Orbi-Trace Tags, 1x Anchor, 1x Gateway, 1x Power Over Ethernet, 10x USB-C cables, mounting brackets, USB 10 port charger. 'PRO' kit also includes a kit case.	

Spares and Accessories	Part Number
Anchor	OTRANCX1
Anchor Mounting Set (3 bracket types)	OTRVESA
USB-C Cable 1m (Pack of 3)	OTRDATA1M
USB 10 Port Charger	OTRCHG10*
Power Over Ethernet (POE)	OTRPOE*
Spare Belt Clip	OTRBC1
Ethernet Gateway	OTRGTW1*

For part numbers marked with a \*, add the appropriate territory after the partner to ensure you receive the correct plug adapter:

United Kingdom 'UK'  
European Union add 'EU'  
United States add 'US'  
Other Countries add 'ROW'

Note: /ROW kits will be provided with universal travel adaptors and a UK plug.



**Casella UK, Bedford, United Kingdom**  
Tel: +44 (0) 1234 844100  
Email: info@casellasolutions.com

**Casella China, IDEAL Industries China, Shanghai, China**  
Tel: +86-21-31263188  
Email: info@casellasolutions.cn

**Casella USA, Sterling, USA**  
Tel: (800) 366 2966  
Email: info-us@casellasolutions.com

**Casella India, IDEAL Industries India Pvt.Ltd, Haryana, India**  
Tel: +91 124 4495100  
Email: casella.sales@ideal-industries.in

**Distributed By:**